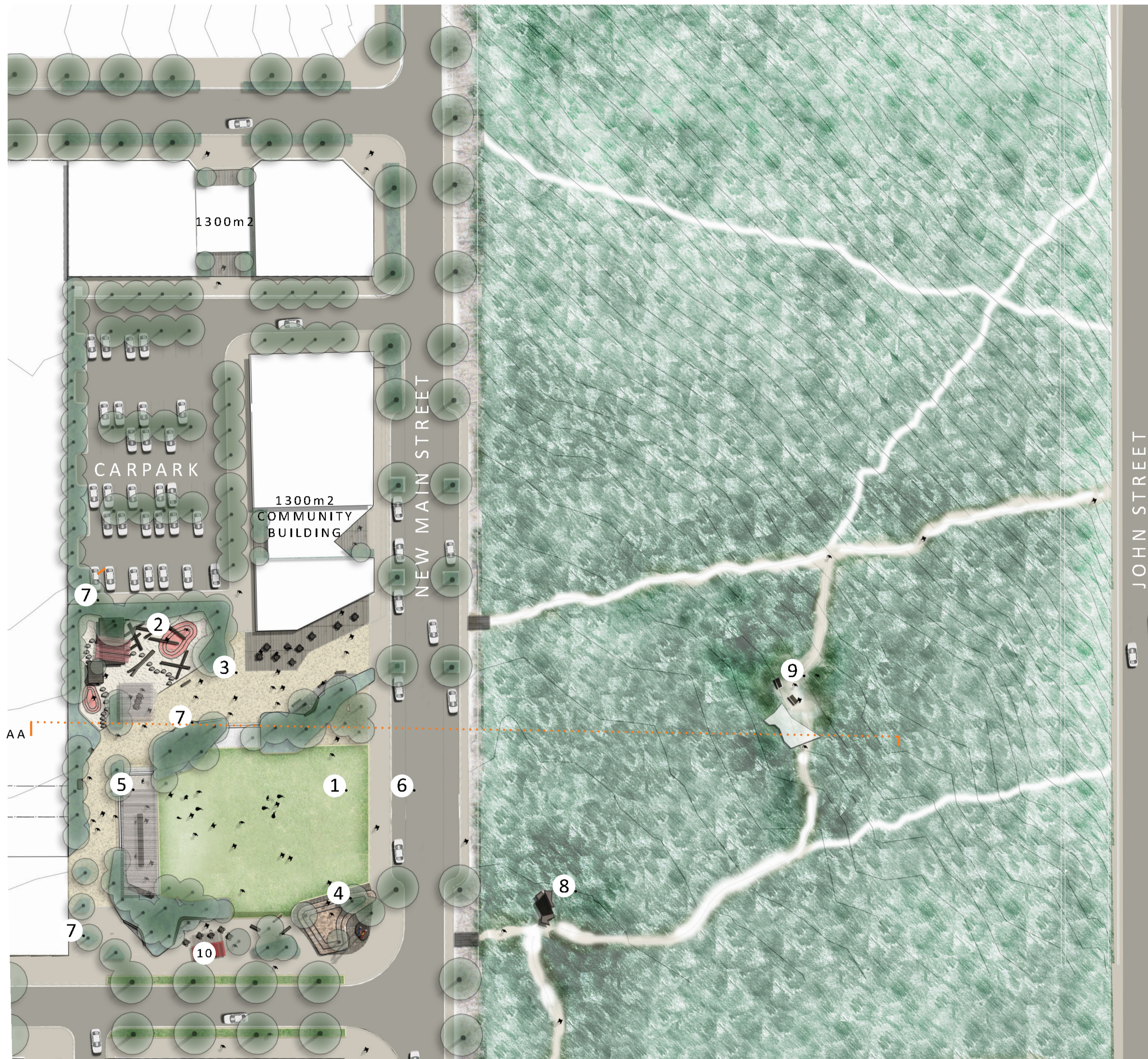
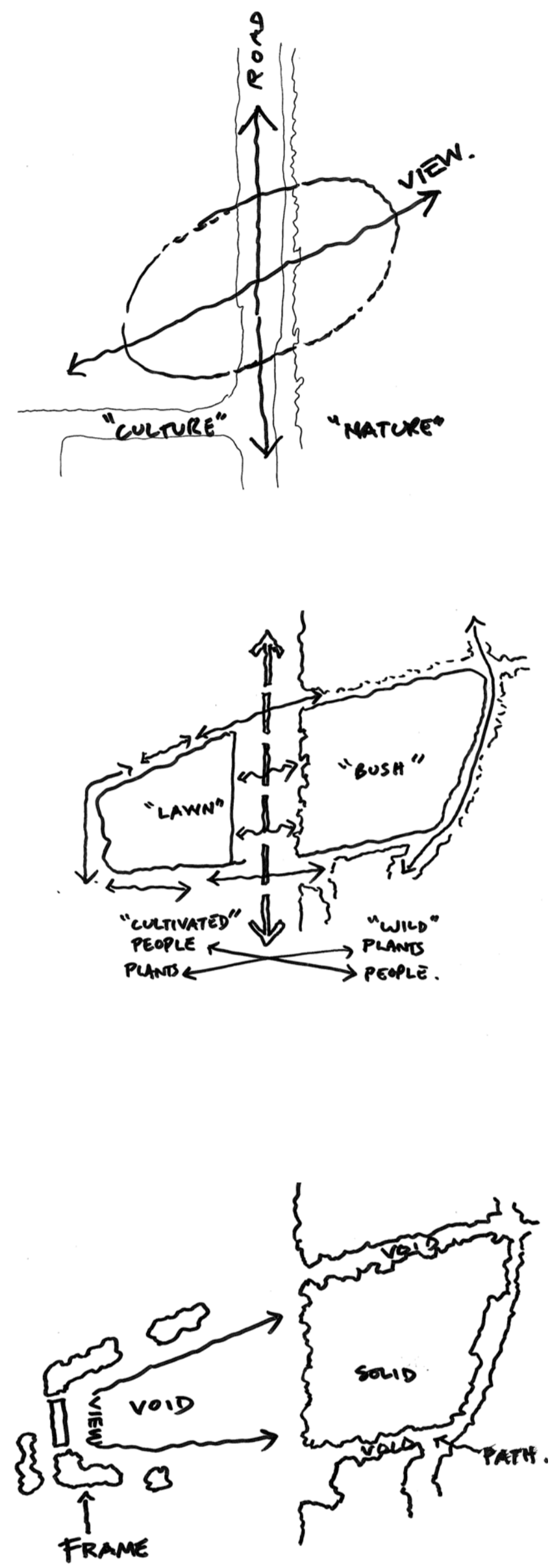
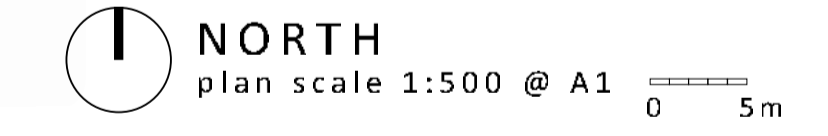


BREMER BAY CIVIC SQUARE



- 1. VILLAGE GREEN**
Sunny lawn slightly titled
1:70 oriented to views
- 2. THREE PENINSULA PLAY AREA**
Nature Play
Surrounded by planting
to protect from carpark
shelter and picnic tables
- 3. MARKET WALK**
Compacted local gravel
Cost effective and easy
to maintain
May erect tents/ Pop ups
and stalls
- 4. THE PODIUM**
Expresses Bremer Bay's
Geology i.e. Gneiss/
Dolomite/ Limestone/
Spongelite.
Skateable
Like the "town hall steps"
Place for flag poles
"Speakers Corner"
- 5. BANQUET TABLE**
10m community banquet
table facing the views
20m designed shelter
BBQ and seating
May be hired for parties
and weddings
Addresses the market
walk, lawn, play area and
views
- 6. STAGE/ SCREENS**
For large events stage and
screen may be transported
into place
- 7. TREES**
Native trees planted in
informal groves they frame
the view and protect from
winds
You can sit under them
- 8. OSPREY NEST**
Interpretive lookout
structure in bush site
access from town square
- 9. BUSH SHELTER**
Interpretive shelter in
bush site
- 10. POP UP**
Opportunities for Pop up
incubators i.e.
food and beverages



SECTION AA
0 5m