



Regional and Metropolitan Services

File No: 01967-2001 Job No: 132609
Enquiries: Shannon Alford
Ph: (08) 6552 4661 Fax: 6552 4415
Email: Shannon.alford@lands.wa.gov.au

6 June 2014

Shire of Jerramungup
PO Box 92
JERRAMUNGUP WA 6337

Dear Sir/Madam

Lot 802 on Deposited Plan 39726 – Proposed Aquaculture Site, Bremer Bay – Shire of Jerramungup

I wish to advise you that the Department has received a request from 7G Engineering to lease unallocated Crown land (UCL) Lot 802 on Deposited Plan 39726 for the purpose of "Aquaculture Site" in Bremer Bay, Shire of Jerramungup.

The Department is considering dealing with the company on a private treaty basis given that past actions seeking expressions of interest have failed to generate interest.

Initially the Department will provide access to the site to the company through an Option to Lease requiring the company to obtain identified approvals under Conditions Precedent (e.g. planning, environmental, licenses to operate etc.) prior to the grant of a lease and development rights.

Would you please provide comments regarding any conditions you would like incorporated into the option to lease or final lease agreement. The rights granted would also include easements rights as required through Reserve 511 and UCL Lots 2174 and 2175 (SmartPlan maps enclosed).

Please also find enclosed summary of proposal, provided by 7G Engineering.

Should you have any questions, please feel free to contact the office on the above number.

Yours faithfully

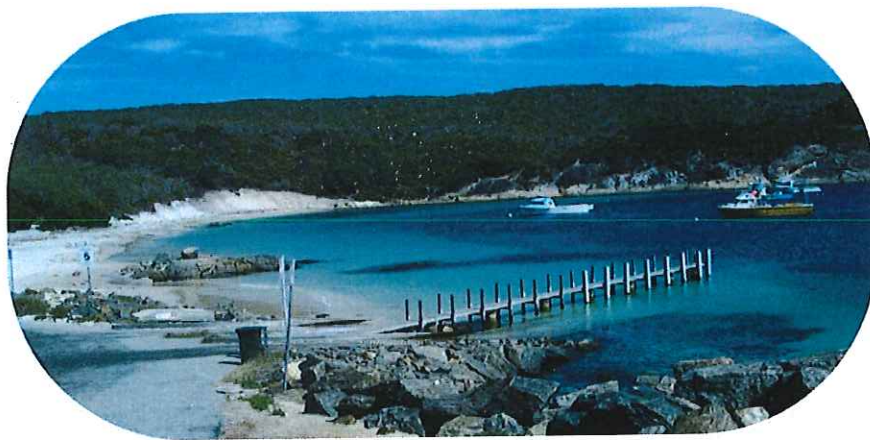

Shannon Alford
Assistant State Land Officer
South West and Great Southern Region

Att.

Ocean Trout Aquaculture



7G FARMS NOMINEES





7G FARMS NOMINEES

- We aim to build a specialized hatchery that will provide an industry leading initiative to produce sustainable, high quality ocean finished and fresh water Trout from a land-based facility.
- Our main markets will be restaurants and fish wholesalers, both locally and in time internationally.
- The availability of land in WA opens to aquaculture is limited, thus the available lease for Lot 802 Bremer Bay provides an excellent position for an Ocean and Fresh water Trout hatchery.
- Being within 10 km of Bremer Bay and 180 km from Albany, this site is also within easy access for labour and amenities in case of emergency.



- The proposed farm will be designed and built to produce up to 300 tonnes of Ocean Trout each year with the possibility of expanding into Short Finned Eel if a suitable supplier can be found.
- The first year of production will be limited to 20 tonnes to allow for the facility to be commissioned and allow for any unforeseen circumstances.
- The facility will increase production to 100 tonnes over the next 18-24 months.
- With a fairly stable water temperature in the region, it has been calculated that it will take approximately 9 months to grow a 1000 grams of fish.



7G FARMS NOMINEES

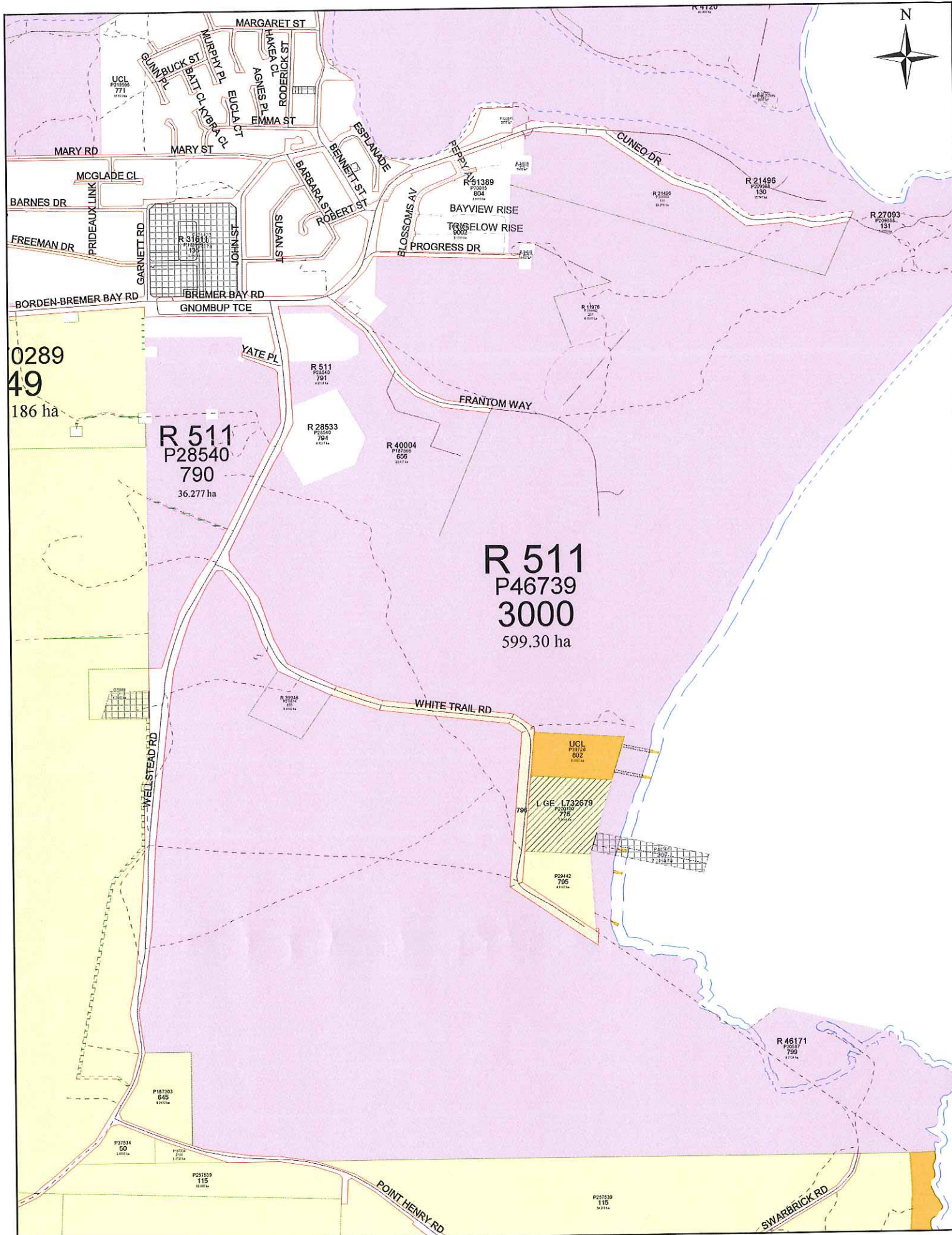
- Brood stock will become a vital part of the operation. A brood stock selection and propagation program will be implemented as soon as viable fish are sourced. The ultimate goal is to become totally self reliant in regards to providing fish for the farm.

- The Hatchery will enclose 10 concrete tanks with a capacity of 10m³ each.

- The hatchery will be stocked with 27.500 of fishes, 4 times a year (dependent on supply of fish/eggs) and with 5 grams of fry/fingerlings. They will stay indoors until they reach approx.15-50 grams (depending on size received). Then they will be moved into the outdoor raceways and slowly acclimated to salt water for grow out and harvesting.

- The objective is to produce 1000 grams fish that will be available whole to restaurants and wholesale markets.

- A Western Australian Aquaculture License will need to be obtained. The holder of an aquaculture license is bound by the conditions prescribed by Fish Resources Management Act 1994 and the Fish Resources Management Regulations 1995.



Scale : 1:15000 (Geographical)
 MGA : SW=717701.2E,6187424.6N Zone 50 / NE=720965.0E,6192261.3N Zone 50
 Lat/Long : 119°22'09.173" , -34°25'54.309" / 119°24'12.453" , -34°23'14.925" H 271mm by W 210mm

Printed : 14:32 Thu 5/Jun/2014
 © Western Australian Land Information Authority 2014

This product is for information purposes only and is not guaranteed. The information may be out of date and should not be relied upon without further verification from the original documents. Where the information is being used for legal purposes then the original documents must be searched for all legal requirements.



WHITE TRAIL RD

WHITE TRAIL RD

UCL
802
5.0000 ha

GE L732679
775
7.3044 ha

UCL
2174
300 m²

UCL
2175
300 m²

796